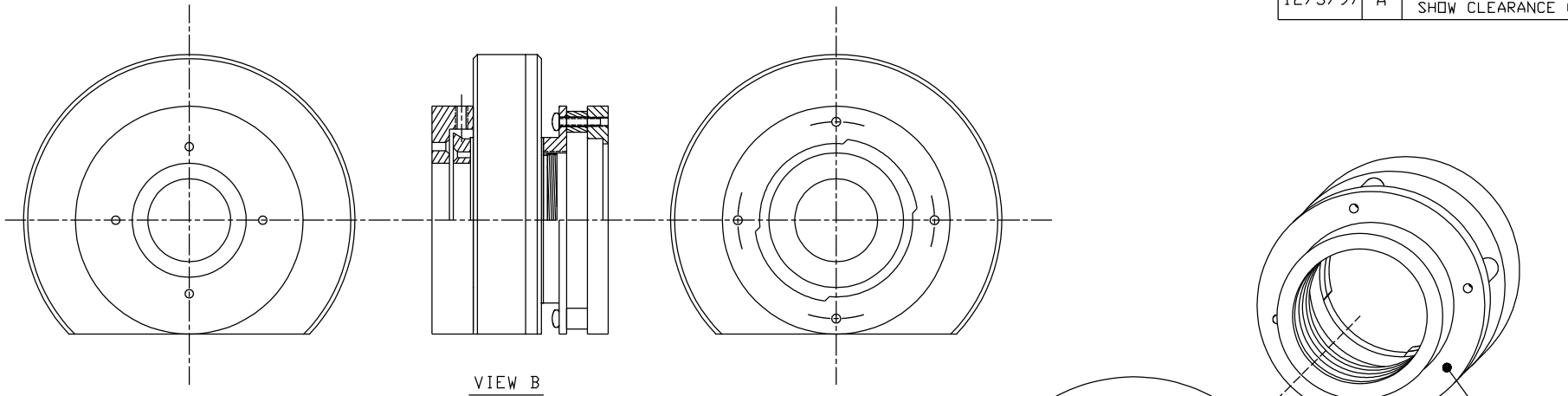
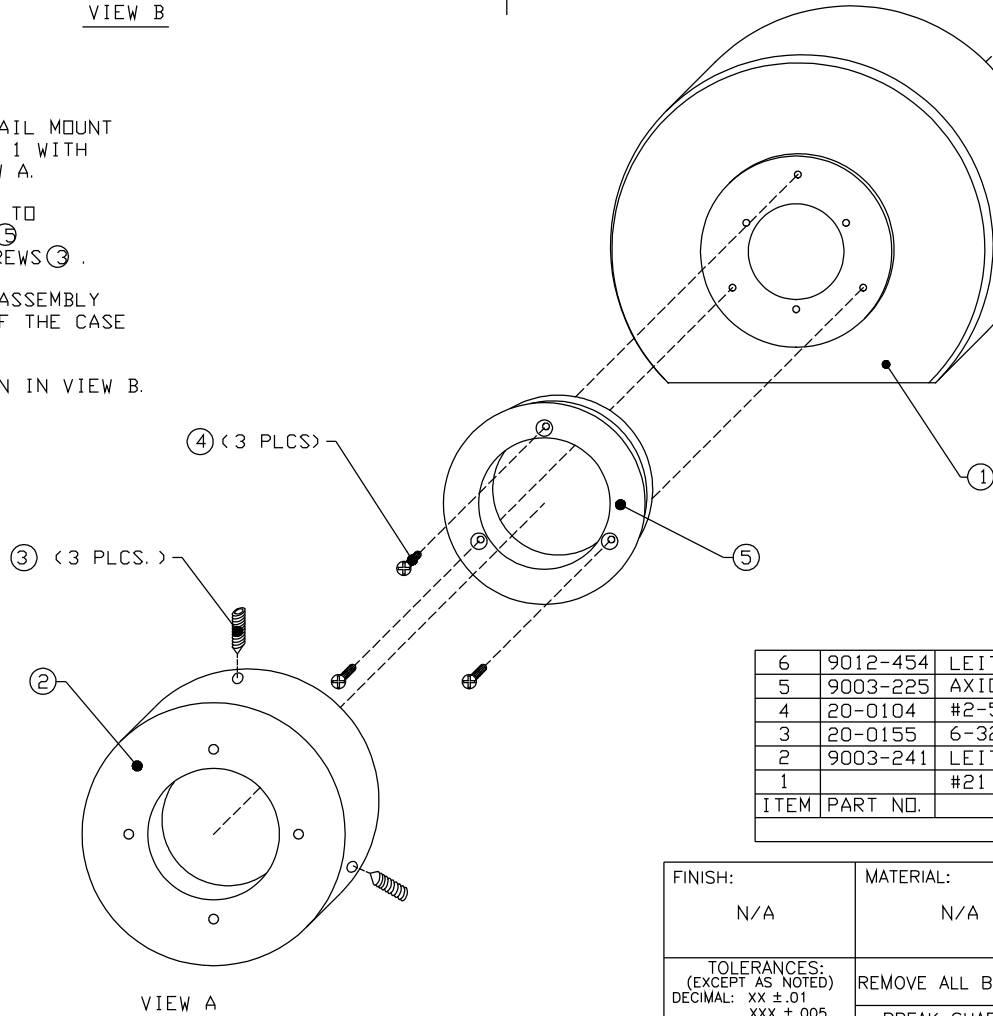


DATE	SYM	REVISION RECORD	AUTH	DR	CK
12/3/97	A	CHANGED CASE TO SHOW CLEARANCE CUT		scm	



NOTES:

1. ASSEMBLE THE AXIO DOVE TAIL MOUNT ⑤ TO THE #2 SHUTTER CASE 1 WITH SCREWS ④ AS SHOWN IN VIEW A.
2. ATTACH LEITZ MOUNT #25 ② TO THE AXIO DOVE TAIL MOUNT ⑤ BY TIGHTENING THE SET SCREWS ③ .
3. ATTACH LEITZ REAR MOUNT ASSEMBLY ⑥ TO THE THREADED SIDE OF THE CASE AS SHOWN IN VIEW A.
4. NOTE FINAL ASSEMBLY SHOWN IN VIEW B.



ITEM	PART NO.	DESCRIPTION	QTY.
6	9012-454	LEITZ MOUNT REAR ASSEMBLY	1
5	9003-225	AXIO DOVE TAIL MOUNT VS35	1
4	20-0104	#2-56 x 5/16 PHILLIPS FL. HD. SCREW	3
3	20-0155	6-32 x 3/8 SOCKET SET CONE PT.	3
2	9003-241	LEITZ CASE #25 MOUNT	1
1		#21 SHUTTER CASE (VS14/25, VS35 OR LS)	1
PARTS LIST			

FINISH: N/A	MATERIAL: N/A	VINCENT ASSOCIATES Rochester, NY 14607		
		TITLE: LEITZ MOUNT #25 ASSEMBLY DRAWING	DRAWN: <i>Chris A.</i> SCALE: NONE	
TOLERANCES: (EXCEPT AS NOTED) DECIMAL: XX ± .01 XXX ± .005 FRACTIONAL: ± 1/32 ANGULAR: ± 1	REMOVE ALL BURRS	FILE NAME: LEITASY.DWG	APPROVED BY: 11/12/96 <i>BJP</i>	DATE: 6/19/96
	BREAK SHARP EDGES	SHEET 1 OF 1	SIZE C	REV. A
			DRAWING NO. 9012-456	